

TAIYO

Company Guide

Since 1917

Contributing to industry and society through
the development and supply of
heavy electric machinery and systems.

Taiyo Electric was founded in 1917 as Yamada Sanritsusha, manufacturing and selling lighting fixtures and electric appliances. Through our long history over 100 years, we have been developing and supplying heavy electric machinery and systems primarily for marine use, that provide widespread support for a broad range of industries and society. Based on the beliefs, "Contribute to society by supplying high quality products." and "Always meet customers' expectations and never betray them." We have also taken craftsmanship very seriously.

We will continue to utilize the advanced technology and knowledge of heavy electric equipment and systems we have cultivated over the course of our history to develop and supply environmentally friendly and energy efficient products that meet the needs of the new era.



Yamada Sanritsusha at the time of its establishment

Corporate Philosophy

Supply high quality and environmentally friendly products and
contribute to societal growth through first-rate service.

Business Approach

Manufacturers, sellers, and users cooperate and
harmonize seeking unlimited mutual prosperity.

President's Message



We remain committed to developing high-quality heavy electric equipment and systems based on sophisticated technology perfected throughout our long history.


Shinzo Yamada, President

Established in 1917, Taiyo Electric has a history of more than 100 years. We supply a comprehensive range of electric equipment and machinery, with special focus on heavy electric equipment as a manufacturer and vendor with a systems division and engineering division. From the time we opened our doors, we have kept pace with industry and society as they continue to change with the times and have always responded to the needs of our customers in earnest. For use in factories, plants, construction sites, supermarkets, gas stations, recreational facilities, and ships and shipbuilding in particular, we respond to the demand for all types of electric power supply systems regardless of whether the need is at home or overseas. In order to provide each of our customers with an optimal solution we continue to hone our technical capabilities and develop and supply products that exceed expectations, which has led to our outstanding reputation in domestic and overseas markets.

At present, we are entering a new era of innovation. Information Technology is evolving at an accelerated pace and a time of major change often described as the Fourth Industrial Revolution stands before us against the background of the evolution and actualization of IoT and AI technologies.

With the technology, knowledge, and achievements we have cultivated over our history of more than 100 years as our foundation, we seek to create new value in this era of change, develop products and systems that meet modern requirements, and further refine the high quality and reliability of our products in order to exceed user expectations.

We look forward to your continued support.

1910s	1920s	1930s	1940s	1950s	1960s	1970s	1980s	1990s	2000s	2010s						
<p>1917 Established as Yamada Sanritsusha. Began manufacturing and selling light fixtures and electric appliances.</p> 	<p>1933 Began manufacturing of small generators for fishing vessels.</p> <p>1935 Began manufacturing switchboards. Manufacturing and sales of small generators for fishing vessels became our core business.</p>	<p>1943 Taiyo Electric Co., Ltd. was established from the merging of three companies: Yamada Sanritsusha, Nihon Senpaku Denki, and Asahi Denki.</p> <p>1944 Gifu factory was completed.</p> 	<p>1950 Separately excited AC generator trial was successful.</p>  <p>Main gate at the Gifu factory</p> <p>1951 Production and delivery of Separately excited AC generators for large ships. Began taking orders for marine induction motors.</p> <p>1956 Taiyo Electric Sales was established. Began mass production of DC generators.</p> <p>1958 Established a standard series of DC generators and began mass production.</p> <p>1959 Developed a self-excited AC generator.</p>	<p>1962 Iseaki factory was completed. The production of switchboards, control devices, and other items was separated from the Gifu factory.</p> 	<p>1966 Taiyo Electric Headquarters Building was completed.</p> 	<p>1968 Gunma Factory was completed.</p> 	<p>1971 Expanded business into industrial generator fields. Established industrial generator system and co-generation system.</p> 	<p>1974 Jakarta office was opened.</p> 	<p>1976 New York office was opened. Established a representative office in Abu Dhabi to expand industrial generator sales. Gifu-Hashima factory was completed. Began producing ventilation fans for ships.</p>  <p>Gifu-Hashima factory</p>	<p>1980 KT Electric Ltd. (Korea) was established.</p> <p>1982 Mihara sales office was opened. Gifu factory became the first electric appliance manufacturer in Japan to be awarded Lloyd's Register Quality Assurance certification.</p> <p>1983 First thyristor shaft generating system was delivered.</p> 	<p>1984 Delivered the first VVVF inverter panel (for Cooling Seawater Pumps).</p>	<p>1993 Number of thyristor shaft generating systems delivered reaches 100. Gifu factory became the first marine manufacturer in Japan to obtain ISO-9001 certification.</p> <p>1995 Kani factory was completed.</p> <p>1996 Gunma Business Center was completed.</p> 	<p>1999 Gunma factory obtained ISO-9001 certification.</p>	<p>2000 Developed a new LX-M industrial generator (PMG excited high-voltage generator). Developed new industrial LX-G/E/H generators (low-voltage generators). Taiyo Techno Sales Ltd. was established.</p> <p>2009 Gifu and Gunma factories obtained ISO-14001 certification.</p>	<p>2010 Established the Technical Headquarters of System Control. Began expanding the development and sales of system products that contribute to protecting the environment and saving energy.</p> 	<p>2011 Delivered the first PWM shaft generating system.</p> <p>2015 Singapore branch was opened. Established the Technical Headquarters of Rotating Machinery.</p> <p>2016 Established the Material & Purchase Headquarters.</p>

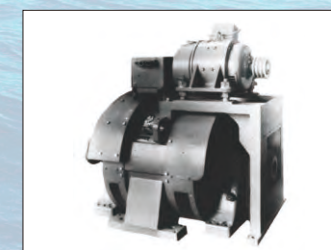
Taiyo Electric, contributing to societal growth by supplying high quality heavy electric machinery and systems, from its founding to today.



DC Generators for the Shipping Bureau's Shipbuilding Plan (1944)



DC Generator for Fishing Vessels (1945)



Revolving field type exciter system AC generator (1955)



Industrial Generator



Axial Flow Ventilator



TEW Brushless AC Generator



Emergency Diesel Generator Set



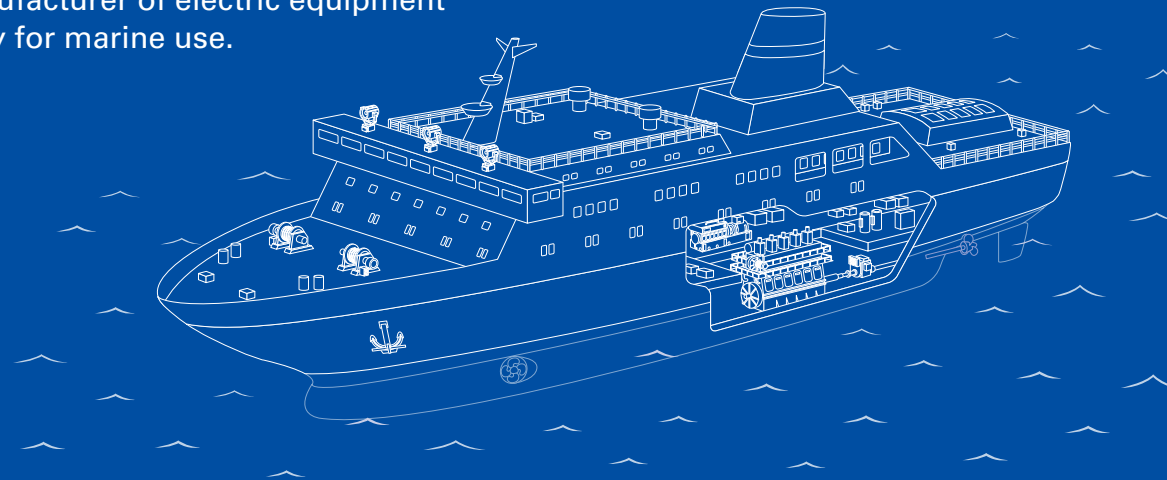
HEW High-Voltage AC Generator 5750 kVA

Business
Field

1

Marine Use

We meet any and all vessel needs as a general manufacturer of electric equipment and machinery for marine use.



As a general manufacturer of electric equipment and machinery for marine use we develop and supply a diverse array of electric equipment, including generators, electric motors, ventilation fans, switchboards, starters, and engine control consoles, as well as system products, such as shaft generating systems and inverter control systems. From fishing boats and small vessels for coastal service, to large vessels, including container ships for overseas service and passenger vessels, as well as government-owned ships for patrolling or research, we supply high quality products used on a variety of vessels, which has led to our outstanding reputation in the electric equipment and machinery for marine use markets both in Japan and abroad.

Products

► Electric Equipment and Machinery

Generators/Electric motors/Switchboards/Engine control consoles/
Ventilation fans/Northern Lights generator sets

► System Products

Shaft generating systems/Electric propulsion systems/
Inverter control systems

From ships to a broad range of industries and society
Taiyo Electric provides a stable power supply to all of our business fields

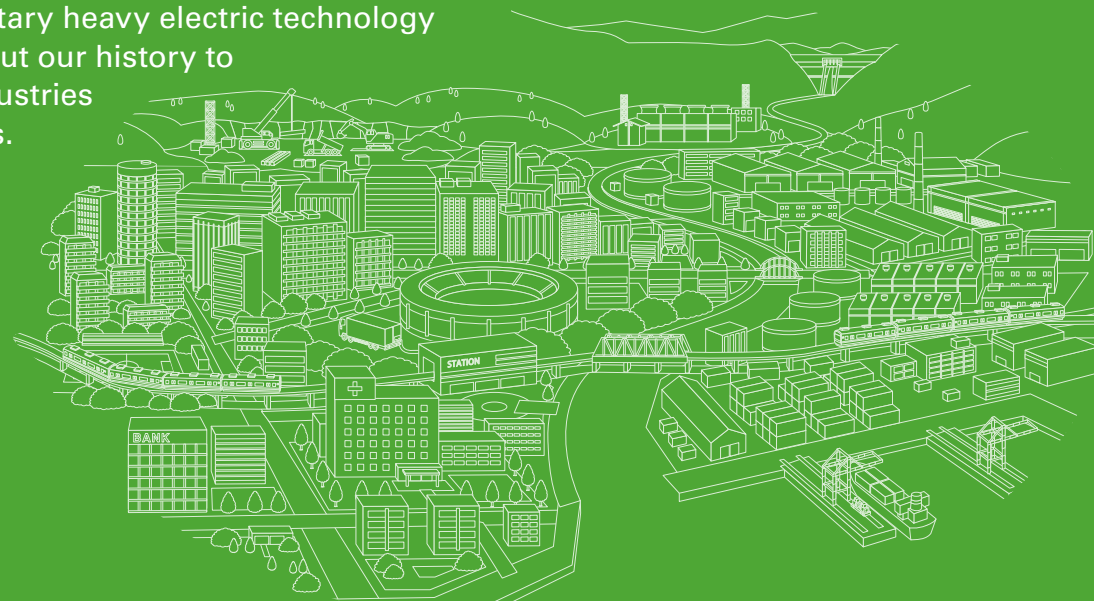
Taiyo Electric has earned the trust of customers around the globe as a general manufacturer of electric equipment and machinery for marine use based on our broad ranging product lineup and reliable product quality. Using that amassed technology and knowledge, we have expanded our business to a wider range of industries and sectors in society continuing to respond to our customers' needs and expectations by making full use of our collective strength as a heavy electric equipment and systems manufacturer.

Business
Field

2

Industrial Use

We provide proprietary heavy electric technology cultivated throughout our history to a wide range of industries and societal sectors.



Taking advantage of our proprietary technology and knowledge developed in the field of electric equipment and machinery for marine use, we have expanded our business to electric equipment and machinery for industrial use. Our lineup offers a broad range of electric equipment and systems including power generator systems with peripheral equipment, co-generation systems, automatic control systems, and remote monitoring systems. Our high quality products and systems are employed in a wide variety of facilities and services, such as office buildings, factories, hospitals, event venues, construction sites, power generation plants, ports, and railroads lending stability to industrial and societal infrastructure.

Products

- Co-generation systems
- Generators (low & high voltage)
- Generator sets (continuous & emergency use)
- Automatic control systems
- Remote monitoring systems

Marine use products

From small fishing boats to large vessels, passenger ships, to government vessels, we provide a stable supply of high quality products for marine use.

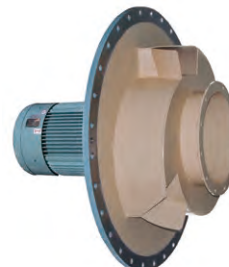
Lighting fixtures
(Sanshin Electric)



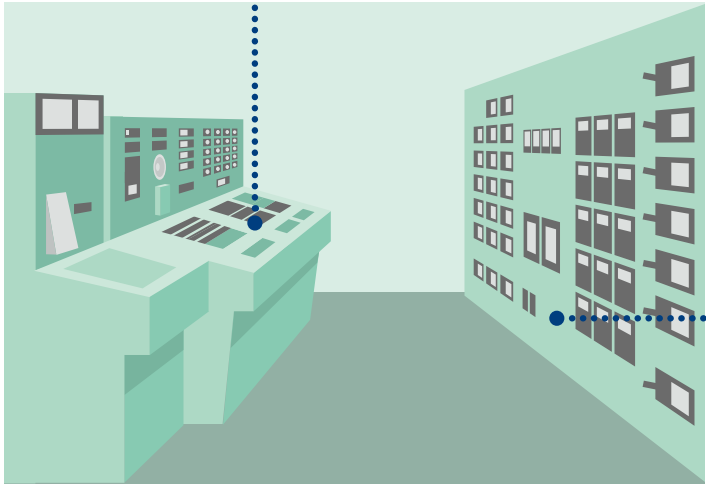
Ventilation fan



Engine auxiliary blower



Engine control room



Engine control console



Switchboard



Inverter panels for
various applications



Motors for various
applications



Starters for various
applications



Electric motor for
deck machinery



Bow thruster motor



Generator



Shaft generator



Industrial use products

Taking advantage of our proprietary heavy electric technology, we provide electric machinery and equipment that meet a wide variety of industrial and societal needs.

At construction sites

Generators for road paving



Generators, control panels and generator sets for construction sites




Mobile and stationary type LED lighting tower



At stadiums and event venues

Generators for mobile power supply vehicles



In office buildings

Co-generation systems



Generators, control panels and generator sets for emergency use



In banks

Three-phase/single-phase multi-output generators



In hospitals

Generators, control panels and generator sets for emergency use




In mountainous regions

Geothermal generators and control panels



Near rivers (mountains)

Hydroelectric generators and control panels



In factories

Generators, control panels and generator sets for continuous use



Co-generation systems



On railroads

Generators and control panels for railroad cars




Ships (pleasure boats)

Generator sets for pleasure boats




At ports

Generators, control panels and generator sets for port cranes

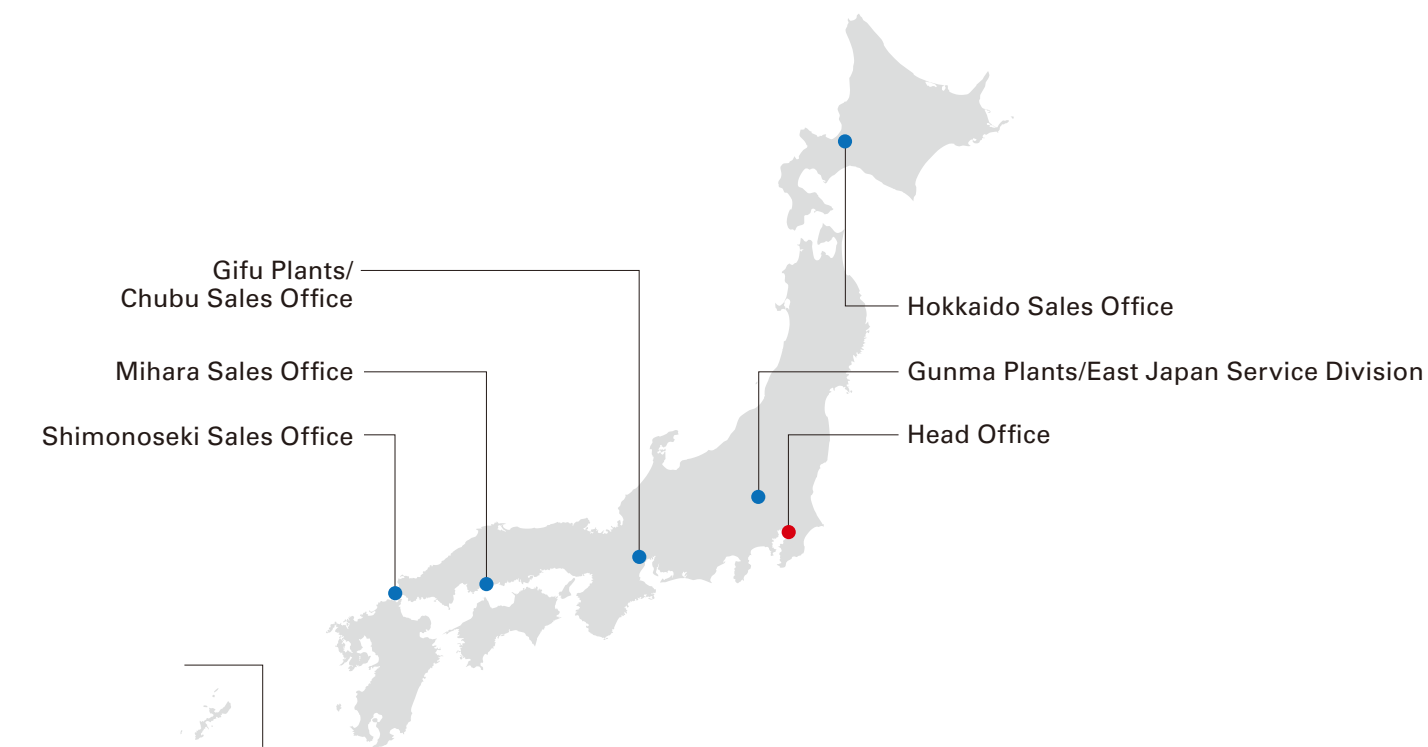
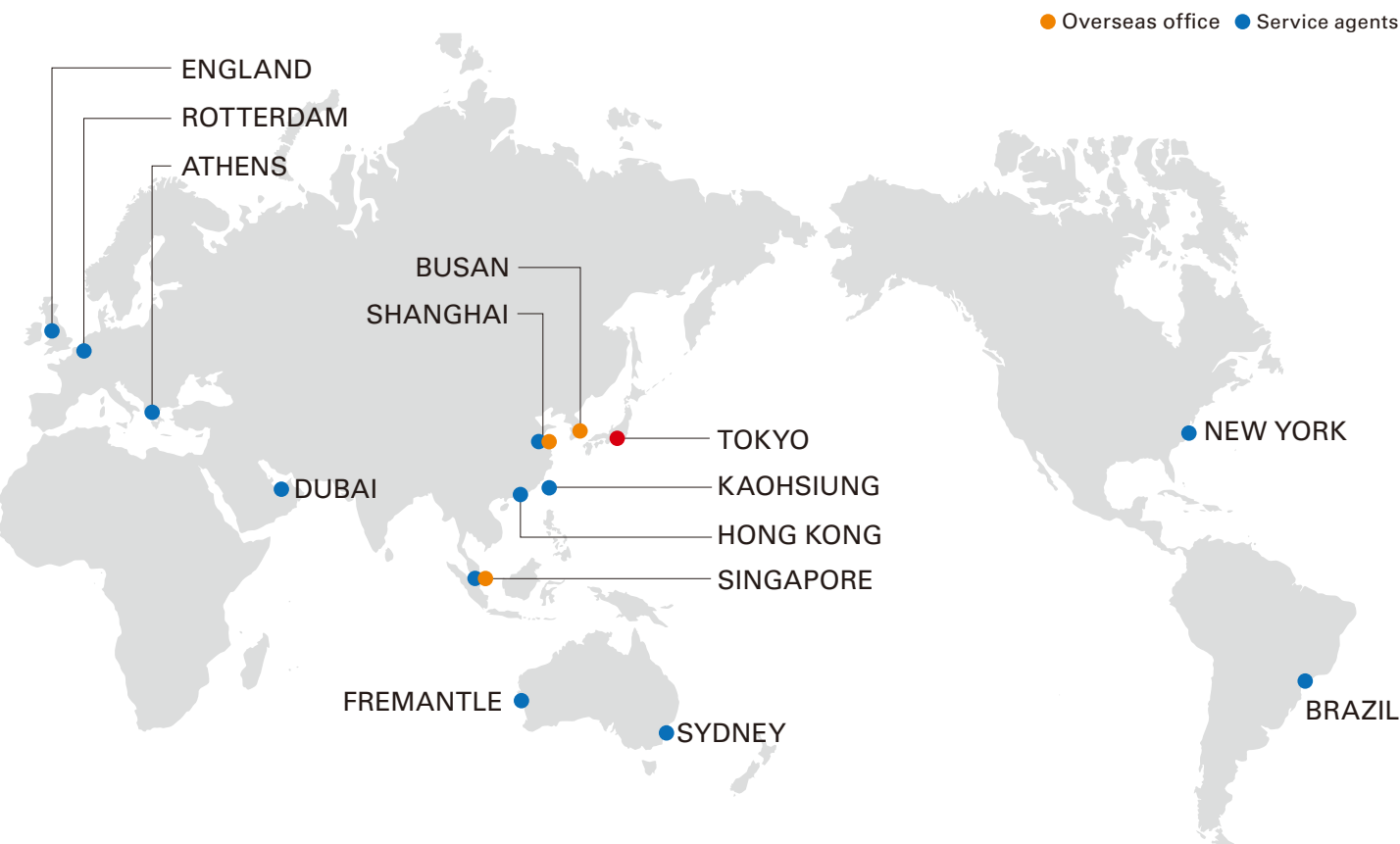


Frequency conversion M-G sets



Our established system of production and after-sales service provides a stable supply of high quality heavy electric equipment and machinery.

At Taiyo Electric, we have created a domestic and overseas network, sales offices, and service agents to provide our customers in the marine sector and diverse range of other industrial sectors with a stable supply of high quality products, and at the same time, offer conscientious support services.



Company Outline

- Trade name Taiyo Electric Co., Ltd.
- Founded 1917
- Established December 15, 1943
- Capital funds 480 million yen
- Head office 9th Fl. Sumitomo Corporation Mitoshiro Bldg. 1-1 Kanda Mitoshirocho, Chiyoda-ku, Tokyo 101-0053
Phone: 03-3293-3061 (main) FAX: 03-3292-7002
- Main financing Mizuho Bank Ltd., Sumitomo Mitsui Banking Corporation, MUFG Bank, Ltd.,
banks Resona Bank Ltd., Mitsubishi UFJ Trust and Banking Corporation, Kiraboshi Bank Ltd.,
The Juroku Bank Ltd.
- Main customers Ministry of Defense/Japan Coast Guard/various public offices/Mitsubishi Corporation/
(honorifics omitted) Mitsui & Co., Ltd./Sumitomo Corporation/Itochu Corporation/Marubeni Corporation/
Mitsubishi Heavy Industries, Ltd./Mitsubishi Heavy Industries Engine & Turbocharger, Ltd./
Kawasaki Heavy Industries/Mitsui E&S Shipbuilding Co., Ltd./
Sumitomo Heavy Industries Marine & Engineering Co., Ltd./Shinko Ind. Ltd./
Kanax Corporation/Shin Kurushima Dockyard Co., Ltd./Namura Shipyard Ltd./
Sasebo Heavy Industries Co., Ltd./The Hakodate Dock Co., Ltd./
Tsuneishi Shipbuilding Co., Ltd./Imabari Shipbuilding Co., Ltd./
Naikai Zosen Corporation/Sanoyas Shipbuilding Corporation/Oshima Shipbuilding Co., Ltd./
Kyokuyo Shipyard Corporation/Niigata Shipbuilding & Repair, Inc./
Sumidagawa Shipyard Co., Ltd./Usuki Shipyard Co., Ltd./Yanmar Co., Ltd./
Japan Marine United Corporation/Daihatsu Diesel Co., Ltd./Niigata Power Systems Co., Ltd./
Hokuetsu Industries Co., Ltd./Tokyo Gas Co., Ltd./Tokyo Gas Engineering Solutions/
Kubota Corporation/Yanmar Energy System Co., Ltd./Kandenko Co., Ltd./
Hitachi Zosen Corporation/Sanyo Denki/Mitsubishi Heavy Industries Engine Systems Co., Ltd./
Tess Engineering Co., Ltd./Eneserve Corporation/
Toshiba Energy Systems & Solutions Corporation/Tokyo Electric Industry Co., Ltd./
Mitsubishi Electric Corporation/Sinfonia Technology Co., Ltd.
- Accredited NK/JG/ABS/DNV-GL/BV/LR/KR/CCS/CR
classifications
- ISO ISO-9001/ISO-14001
- Other NEGA registered factory
certifications
- Major affiliated The Japan Electrical Manufacturers' Association/
organizations Japan Ship Machinery and Equipment Association/
Japan Ship-Machinery Quality Control Association/Japan External Trade Organization/
Nippon Engine Generator Association/Japan Machinery Center for Trade and Investment/
The Tokyo Chamber of Commerce and Industry, and others

Domestic Services and Group Companies

Head Office/Sales Offices/Plants

- Head Office 9th Fl. Sumitomo Corporation Mitoshiro Bldg. 1-1 Kanda Mitoshirocho, Chiyoda-ku, Tokyo 101-0053
Phone: 03-3293-3061 (main) FAX: 03-3292-7002
- Hokkaido Sales Office 10th Fl. Nihon Seimei Sapporo Bldg. 4-1 Kita 3 Jonishi, Chuo-ku, Sapporo-shi, Hokkaido 060-0003
Phone: 011-241-7316 (main) FAX: 011-241-7318
- East Japan Service Division 726 Yattajima-machi, Isesaki-shi, Gunma-ken 372-0827
Phone: 0270-32-1234 (main) FAX: 0270-31-2789
- Chubu Sales Office 18 Kisaragicho, Kasamatsu-cho, Hashima-gun, Gifu-ken 501-6084
Phone: 058-387-1325 (main) FAX: 058-387-9510
- Mihara Sales Office 1-25-6 Shiromachi, Mihara-shi, Hiroshima-ken 723-0014
Phone: 0848-62-5150 (main) FAX: 0848-62-4495
- Shimonoseki Sales Office 702 Kaikyo Messe 3-3-1 Buzendacho, Shimonoseki-shi, Yamaguchi-ken 750-0067
Phone: 083-237-0603 (main) FAX: 083-237-1813

Group Companies

- Taiyo Techno Sales Ltd. 9th Fl. Sumitomo Corporation Mitoshiro Bldg. 1-1 Kanda Mitoshirocho, Chiyoda-ku, Tokyo 101-0053
Phone: 03-3291-5916 FAX: 03-3295-5764
- Sanshin Electric Corporation 6th Fl. Uchikandachuo Bldg. 1-18-13 Uchi-Kanda, Chiyoda-ku, Tokyo 101-0047
Phone: 03-3295-1831 FAX: 03-5259-7161
- Taiyo Denko Co., Ltd. 3-1 Masakicho Sakamaru, Hashima-shi, Gifu-ken 501-6229
Phone: 058-392-8638 FAX: 058-392-8647
- Taiyo Casting Co., Ltd. 113 Kinzokudanchi, Kakamigahara-shi, Gifu-ken 504-0957
Phone: 058-383-8336 FAX: 058-383-8357
- Hashima Denki Co., Ltd. 114-1 Masakicho Sukaakamatsu, Hashima-shi, Gifu-ken 501-6215
Phone: 058-392-2558 FAX: 058-392-2559

Overseas, Joint Ventures

- KTE CO., LTD. 95-12, Noksansaneop-daero, Gangseo-gu, Busan 618-817, Korea

Office Information

Gifu Plants

Gifu Factory



18 Kisaragicho, Kasamatsu-cho, Hashima-gun,
Gifu-ken 501-6084

Phone: 058-387-4111 (main) FAX: 058-388-1955

- Completed in 1944

Main Products

- Shaft generating systems (200 kW – 4,000 kW)
- Mid and large-size generators (300 kVA – 6,000 kVA)
- Various electric motors (0.4 kW – 3,000 kW)
- Electronic control devices

Gifu Hashima Factory



3-1 Sakamaru, Masaki-cho, Hashima-shi,
Gifu-ken 501-6229

Phone: 058-392-8500 (main) FAX: 058-392-8501

- Completed in 1976

Main Products

- Axial flow ventilators
- Various centrifugal blowers (FD fans, turbo fans)
- Sound reducing axial flow ventilators and muffling devices

Kani Factory



1076-1 Kaneyama, Kani-shi, Gifu-ken 505-0130

Phone: 0574-59-2121 (main) FAX: 0574-59-2124

- Completed in 1995

Main Products

- Compact D/G sets
- Northern Lights generator equipment
- Compact generators

Yamatoku Factory



1089 Dendai Wakamiya, Kasamatsu-cho, Hashima-gun,
Gifu-ken 501-6062

Phone: 058-388-3868 (main) FAX: 058-388-3873

- Completed in 2006

Main Products

- Various electric motors and generator winding operations

Gunma Plants

Controller Factory

726 Yattajima-machi, Isesaki-shi, Gunma-ken 372-0827
Phone: 0270-32-1234 (main) FAX: 0270-31-2789

- Completed in 1962

Main Products

- Various marine and industrial use switchboards and console
- Various marine use control systems
- Various marine use starters
- Electronic control equipment and devices



Generating System Factory

330-5 Yattajima-machi, Isesaki-shi, Gunma-ken 372-0827
Phone: 0270-32-1238 (main) FAX: 0270-32-2444

- Completed in 1968

Main Products

- Various generator systems (co-generation, standard, and emergency use, civil engineering construction machinery use)
- Small and mid-sized generators (3 kVA – 850 kVA)
- Various electric motors (0.4 kW – 132 kW)



Taiyo Techno Sales Ltd. Electronic Division

3133 Sakaiyoku, Isesaki-shi, Gunma-ken 370-0105
Phone: 0270-76-3100 FAX: 0270-76-2756

- Completed in 1985

Main Products

- Automatic Synchronizing Device (ASD)
- Automatic Voltage Regulator (AVR)
- Power Controller (PWC)



Overseas Offices/Service Agents

Overseas Offices

SHANGHAI	SHANGHAI LIAISON OFFICE
	Room 11 I&j, 726 Yan An Rd(West), Shanghai, China Phone 86-21-62121507 FAX 86-21-62346939 E-mail taiyoshanghai@126.com
BUSAN	KTE CO., LTD.
	95-12, Noksansaneop-daero, Gangseo-gu, Busan 618-817, Korea Phone 82-51-265-0255 FAX 82-51-265-0250 E-mail ktcs@kte.co.kr
SINGAPORE	TAIYO ELECTRIC CO., LTD. SINGAPORE BRANCH
	80 Robinson Road #10-01A 068898 Singapore Phone 65-6420-6905 E-mail singapore-office@taiyo-electric.co.jp

Service Agents

NEW YORK	K.K. MARINE CONSULTING LLC
	153-83RD Street, Brooklyn, New York, USA 11209 Phone 1-718-875-6700 FAX 1-718-833-6123 PIC Mr. Bill Crokos E-mail service@kkmarineus.com
BRAZIL	METALOCK BRASIL LTDA
	Rua Visconde Do Rio Branco, 20/26 11013-030 Santos Sp Brazil Phone 55-13-3226-4686 FAX 55-13-3226-4680 URL www.metalock.com.br PIC Mr. Silvio Alves E-mail santos@metalock.com.br
ENGLAND	ROTARY ELECTRICAL SERVICES LTD.
	Old Lane, Halfway, Sheffield, S20 3GZ, UK Phone 44-7585-144-672 FAX 44-1143-276-077 URL www.rotaryelectrical.co.uk PIC Mr. Ian Walker E-mail info@rotaryelectrical.co.uk
ROTTERDAM	ENGIE SERVICES WEST INDUSTRIE BV
	Willingestraat 4, 3087 An Rotterdam (P.O.Box 59122, 3008 Pc Rotterdam)- the Netherlands Phone 31-88-4843843 FAX 31-88-4843844 URL www.engie-services.nl E-mail shiprepair.nl@engie.com

ATHENS	FRANMAN LIMITED
	220 Syngrou Avenue, Athens 176 72, Greece Phone 30-210-9532350 FAX 30-210-9532355 E-mail info@franman.gr
SHANGHAI	JIANGYIN DAITO ENGINEERING CO., LTD.
	Room No.1503, 1-251 Jiashan-lu, Shanghai, China Phone 86-21-64725896 FAX 86-21-34060687 E-mail cm_wang@daito.com.cn
DUBAI	MARITRONICS
	P.O.Box No.6488 #72, Al Jeadf Ship Docking Yard, Dubai, U.A.E. Phone 971-4-3247500 FAX 971-4-3242500 URL www.maritronics.com PIC Mr. Ashley Murzello E-mail service@maritronics.com
KAOHSIUNG	RESON ELECTRONICS INT'L INC.
	12th Fl, No.1-26, Kuoh Jiann Rd, Chien Chen Dist, Kaohsiung, Taiwan Phone 886-7-815-0036 FAX 886-7-815-1438 URL www.reson.com.tw PIC Mr. Adams Yang E-mail service@reson.com.tw
HONG KONG	THE SUN MARINE RADIO ENGINEERING CO.
	19/f, Flat E, Kwong Ga Fty., Bldg. 64 Victoria Rd. Kennedy Town, H.K. Phone 852-2855-9613 FAX 852-2855-0519 PIC Mr. Eric Lee E-mail sunmarin@netvigator.com
SINGAPORE	CYCLECT ELECTRICAL ENGINEERING PTE LTD.
	33, Tuas View Crescent, Singapore 637654 Phone 65-6863-6877 FAX 65-6863-6260 URL www.cyclelect.com.sg E-mail info@cyclelect.com.sg
PERTH	SULZER AUSTRALIA PTY LTD.
	70 Fawcett Crescent Perth, Western Australia 6105, Australia Phone 61-8-6369-7373 URL www.sulzer.com PIC Chris Langham (Managing Director) E-mail sulzertsaustralia@sulzer.com
SYDNEY	SULZER AUSTRALIA PTY LTD.
	14-16 Clyde Street, Rydalmere, New South Wales 2116, Australia Phone 61-2-9638-6333 URL www.sulzer.com PIC Chris Langham (Managing Director) E-mail sulzertsaustralia@sulzer.com



Taiyo Electric Co., Ltd.

9th Fl. Sumitomo Corporation Mitoshiro Bldg.
1-1 Kanda Mitoshirocho, Chiyoda-ku, Tokyo 101-0053
Phone: 03-3293-3061 (main) FAX: 03-3292-7002

- Hokkaido Sales Office 10th Fl. Nihon Seimei Sapporo Bldg. 4-1 Kita 3 Jonishi,
Chuo-ku, Sapporo-shi, Hokkaido 060-0003
Phone: 011-241-7316 (main) FAX: 011-241-7318
- East Japan Service Division 726 Yattajima-machi, Isesaki-shi, Gunma-ken 372-0827
Phone: 0270-32-1234 (main) FAX: 0270-31-2789
- Chubu Sales Office 18 Kisaragicho, Kasamatsu-cho, Hashima-gun, Gifu-ken 501-6084
Phone: 058-387-1325 (main) FAX: 058-387-9510
- Mihara Sales Office 1-25-6 Shiromachi, Mihara-shi, Hiroshima-ken 723-0014
Phone: 0848-62-5150 (main) FAX: 0848-62-4495
- Shimonoseki Sales Office 702 Kaikyo Messe 3-3-1 Buzendacho, Shimonoseki-shi,
Yamaguchi-ken 750-0067
Phone: 083-237-0603 (main) FAX: 083-237-1813