

## Service Letter

Date : Sep 03, 2019

Ref. No.: HGS-HSM-SL-19-011

**Subject: Improvement of Pre-lubricating oil pump - Jaw coupling spider**

**Product: HiMSEN**

**Type : All**

Recently it has been reported that the abnormal sound from pre-lubricating oil pump was occurred. After the investigation, we found that jaw coupling spider was damaged by thermal strain.

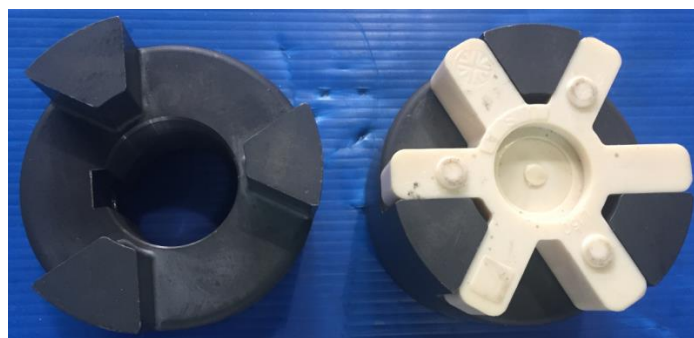
In case it is continuously operated under lube oil temp. above 75 °C, thermal strain could be occurred in jaw coupling spider. To increase its durability, the spider material was improved from TPU to Hytrel.

Since we have many field references for the spider with TPU material, its application is still valid if there was no failure. However, we recommend that the customer replaces it with improved one, the spider with Hytrel in case the similar failure is occurred.

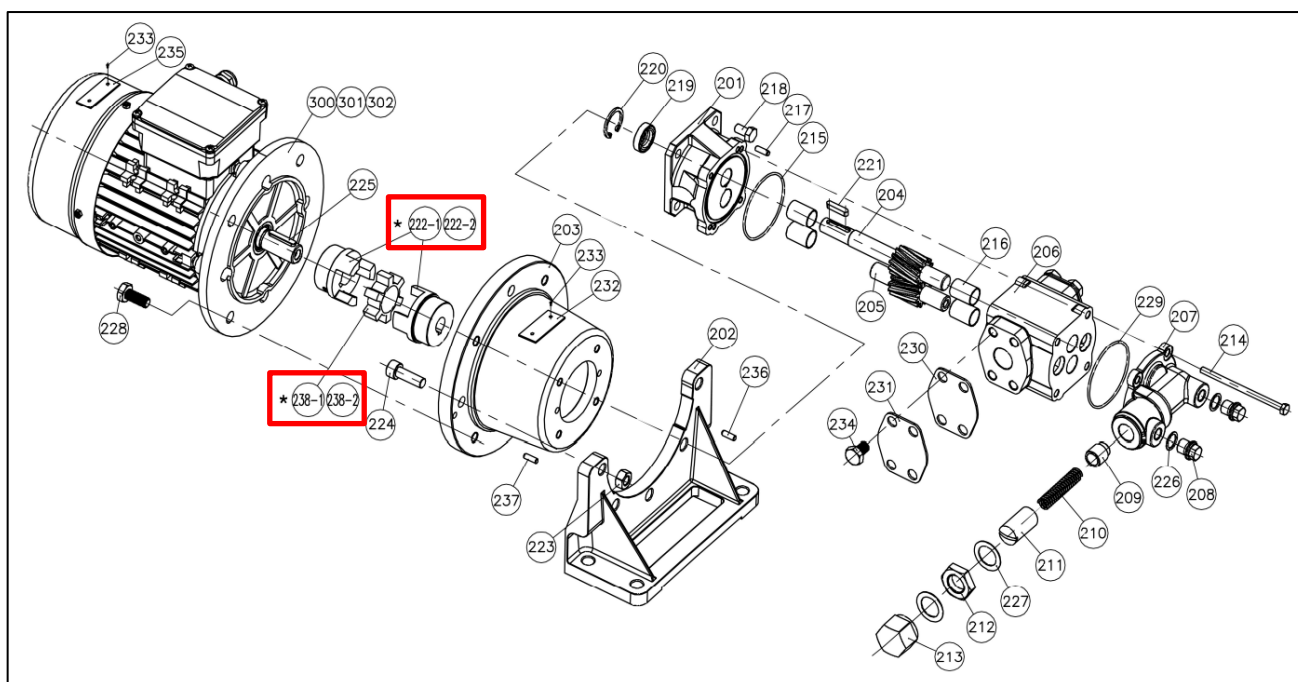
In case of the replacement with improved one, the replacement of jaw coupling hub is also required since TPU hub is incompatible with hytrel insert and vice versa.



[Fig1. Jaw coupling ass'y – spider/TPU]



[Fig2. Jaw coupling ass'y – spider/Hytrel]



### List of components

\* TPU hub is incompatible with hytrel insert and vice versa

POS. NO	Denomination	QTY	PART.NO.	weight	POS. NO	Denomination	QTY	PART.NO.	weight
			YRB080 YRE080 YRH080	(kg)				YRB080 YRE080 YRH080	(kg)
201	DRIVING COVER	1	YR0080-201	2.3	223	NUT	3	YR080-223	0.015
202	BRACKET	1	YR080-202	1.1	224	SOCKET HEAD BOLT	3	YR080-224	0.045
203	CONNECTION COVER	1	YR080-203	2.1	225	KEY	1	YR080-225	0.02
204	DRIVING GEAR SHAFT	1	YR080-204	0.77	226	WASHER	2	YR080-226	0.001
205	GEAR SHAFT	1	YR080-205	0.57	227	WASHER	2	YR080-227	0.005
206	GEAR HOUSING	1	YR080-206	3.2	228	HEX'S HEAD BOLT	4	YR080-228	0.04
207	VALVE HOUSING	1	YR080-207	1.0	229	O-RING	1	YR080-229	0.004
208	PLUG	2	YR080-208	0.03	230	RUBBER PLATE	2	YR080-230	0.02
209	PISTON	1	YR080-209	0.045	231	COVER PLATE	2	YR080-231	0.095
210	COMPRESSION SPRING	1	YR080-210	0.015	232	NAME PLATE	1	YR080-232	0.005
211	SPRING HOUSING	1	YR080-211	0.045	233	RIVETS	4	YR080-233	0.002
212	STOP NUT	1	YR080-212	0.035	234	HEX'S HEAD BOLT	8	YR080-234	0.03
213	CAP NUT	1	YR080-213	0.12	235	NAME PLATE	1	YR080-235	0.002
214	HEX'S HEAD BOLT	4	YR080-214	0.07	236	SPRING PIN	2	YR080-236	0.002
215	O-RING	1	YR080-215	0.004	237	SPRING PIN	2	YR080-237	0.002
216	BUSH	4	YR080-216	0.025	238-1	COUPLING INSERT(TPU)	1	YR080-238	0.02
217	PIN	2	YR080-217	0.005	222-2	JAW COUPLING HUB(Hytrel)	1	YR080-239	0.75
218	HEX'S HEAD BOLT	4	YR080-218	0.025	238-2	COUPLING INSERT(Hytrel)	1	YR080-240	0.02
219	OIL SEAL	1	YR080-219	0.01	300	MOTOR (Brook)	1	YRB080-300	29.0
220	SNAP RING	1	YR080-220	0.003	301	MOTOR (Hoyer)	1	YRE080-301	22.0
221	KEY	1	YR080-221	0.007	302	MOTOR (Hyundai)	1	YRH080-302	43.0
222-1	JAW COUPLING HUB(TPU)	1	YR080-222	0.75					

[Fig3. Jaw coupling ass'y – list of components/sample]

For more information and support, please contact the nearest service station of Hyundai Global Service.

Faithfully yours,



---

G. Y. Oh, General Manager  
Machinery Service Dep't  
Technical Division

<http://www.hyundai-gs.com>

[EOD]